

# CG Jung Society of WA

# Program Summary

# 2019

<p><b>March 24</b> Sunday 2– 4pm</p> <p><b>Library Open Day and Book Sale</b></p> <p><b>Venue:</b> Library: 83 Archdeacon St Nedlands</p>	<p><b>April 12</b> Friday 7:30 – 9pm</p> <p><b>Film</b></p> <p><i><b>The Lion King</b></i> <i>Excerpts from the lectures of Jordan Peterson</i> With a Panel Discussion <b>On Masculine Psychology</b></p> <p><b>Note this is the second Friday of the month due to Easter</b></p> <p><b>Venue:</b> Mary Lockett Lecture Theatre QEII Medical Centre</p>	<p><b>April 13</b> <b>June 22</b> <b>July 20</b> Saturdays 10:00-12:00</p> <p><b>Fairy Tale Discussion Group</b></p> <p><i><b>Archetypal Patterns in Fairy Tales</b></i></p> <p>Manita Beskow Brittain Garrett</p> <p><b>Venue:</b> Hovea Ashram 805 Margaret Road Hovea</p>	<p><b>May 17</b> Friday 7:30 – 9pm</p> <p><b>Lecture</b></p> <p><i><b>Mother Daughter Relationship</b></i></p> <p>Manita Beskow</p> <p><b>Venue:</b> Mary Lockett Lecture Theatre QEII Medical Centre</p>	<p><b>May 18</b> Saturday 10am –4pm</p> <p><b>Workshop</b></p> <p><i><b>Mother Daughter Relationship</b></i></p> <p>Manita Beskow</p> <p><b>Venue:</b> Hovea Ashram 805 Margaret Rd Hovea</p>	<p><b>June 21</b> Friday 7:30– 9pm</p> <p><b>Film</b></p> <p><i><b>Trauma and the Soul</b></i>  <i><b>Part 1</b></i></p> <p>Donald Kalsched</p> <p>With a Panel Discussion</p> <p><b>Venue:</b> Mary Lockett Lecture Theatre QEII Medical Centre</p>	<p><b>July 19</b> Friday 7:30 – 9pm</p> <p><b>Film</b></p> <p><i><b>Trauma and the Soul</b></i>  <i><b>Part 2</b></i></p> <p>Donald Kalsched</p> <p>With a Panel Discussion</p> <p><b>Venue:</b> Mary Lockett Lecture Theatre QEII Medical Centre</p>	<p><b>August 16</b> Friday 7:30–9pm</p> <p><b>Film</b></p> <p><i><b>Dancing in the Flames</b></i></p> <p>Marion Woodman</p> <p><b>Venue:</b> Mary Lockett Lecture Theatre QEII Medical Centre</p>	<p><b>Sept 20</b> Friday 7:30-9pm</p> <p><b>Lecture</b></p> <p><i><b>Fathers and Daughters</b></i>  <i><b>From shadow to agency: Fathering and a daughter's emergent self</b></i></p> <p>Katy Bannister</p> <p><b>Venue:</b> Mary Lockett Lecture Theatre QEII Medical Centre</p>
---	--	--	---	---	--	---	---	---

## Membership

Membership of the Society is open to all people interested in Jungian and Post Jungian Psychology.

**A Meeting Membership**, in addition to being an expression of support to the Society, gives you discount for lectures and workshops.

**A Library Membership**— open to Members of the Society giving access to a full spectrum of Jungian thought from 'The Collected Works of C.G. Jung' to current Jungian Journals. Lending is restricted on some items.

**Mailing List** – Interested persons can be on the mailing list to receive the current program and information on upcoming events.

### 2019 Annual Membership Fees

Meeting and Library Membership	\$80
Meeting Membership	\$70
Conc. Meeting Membership and Library	\$50
Concession Meeting Membership	\$40

Annual Membership runs from April to April

Payment can be made in cash at any meeting, by cheque (made out to CG Jung Society of WA), or, online

Westpac BSB: 036 034, Acc: 324 577 **Please write your name** and type of membership as the description and notify the Secretary Susan Thorman at Secretary@jungwa.org

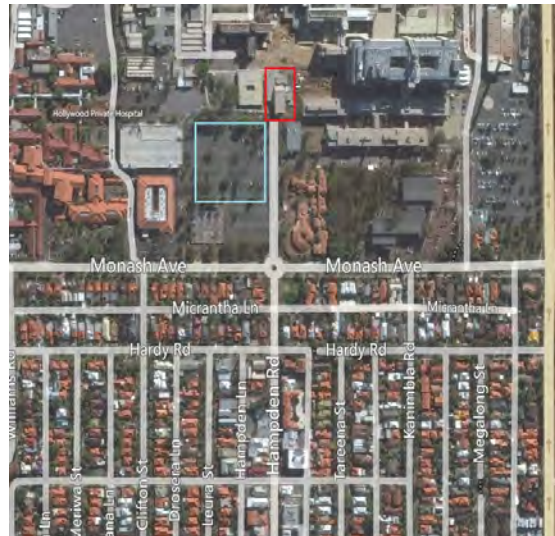
### Society Committee and Volunteers 2018

<u>President</u> <b>Brittain Garrett</b>	President@jungwa.org
<u>Vice President</u> <b>Lorenz Gude</b>	VicePresident@jungwa.org
<u>Secretary</u> <b>Susan Thorman</b>	Secretary@jungwa.org
<u>Treasurer</u> <b>Vince O'Sullivan</b>	Treasurer@jungwa.org
<u>Librarian</u> <b>Olive Mason</b>	Librarian@jungwa.org
<u>Website</u> <b>Zane Stein</b>	Webguru@jungwa.org
<u>Committee Members</u> <b>Jan Rodda</b>	
<b>Cherie Carlo</b>	
<b>Vivien Bainbridge</b>	

## Venue Details

Mary Lockett Lecture Theatre  
(F.J. Clarke Lecture Hall)  
QEII Medical Centre,  
Caladenia Loop, Nedlands.

Caladenia Loops is the continuation of Hampden Road as it enters the QEII complex (see map below). The lecture hall is at the end of Caladenia in the red box on the map.



### *The C G Jung Society of WA Library*

You do not have to be a Library Member to visit the library and have a look. Society and Library Membership is required if you wish to borrow books and there is a borrowing limit. Books may be borrowed for one month at a time and can be renewed by phone or email if not required by another borrower. The library is open the **first Sunday of the month 2-5pm**. Library Members may also visit the library by appointment. Please contact Olive Mason (Librarian) on 9386 5968 or Librarian@jungwa.org to arrange a mutually suitable time.

**83 Archdeacon St, Nedlands**

# C G Jung Society of Western Australia Inc



## Program Guide 2019

The CG Jung Society of WA Inc is a non-profit association which aims to promote a greater understanding of Jungian Psychology. Monthly public meetings are held with speakers and films covering a variety of topics with a Jungian emphasis. Public seminars and workshops led by local, interstate, and international Jungian Analysts are also arranged by the Society. A comprehensive library, including rare editions and Jungian journals, is maintained by the Society.

### Admission Fees

#### Lectures

Members:	\$10
Concession:	\$15
General:	\$20

#### Films

Members:	\$5
Concession:	\$10
General:	\$15

**Workshops** - Check event details.

Correspondence and enquiries to the President:

Brittain Garrett phone: 0417 958 658

email: president@jungwa.org

[www.jungwa.org](http://www.jungwa.org)